



# FINAL RACES

TT CIRCUIT ASSEN 2023





# Official Notice Board:





# Timeschedule V11



Friday 27st October 2023 - 09:00 till 17:55 hour							
09:00	10:00	60	5	MIN	Free Practice 1	Supercar Challenge + Protoype Challenge	60 minutes
10:05	11:05	60	5	MIN	Free Practice 1	BMW M2 CS Racing Cup Benelux	60 minutes
11:10	12:10	60	5	MIN	Free Practice 2	Supercar Challenge + Protoype Challenge	60 minutes
12:15	13:00	45	5	MIN	Break	Lunchbreak	45 minutes
13:05	14:05	60	5	MIN	Free Practice 2	BMW M2 CS Racing Cup Benelux	60 minutes
14:10	14:40	30	5	MIN	Free Practice 1	BetCity Mazda MX-5 Cup	30 minutes
14:45	15:15	30	5	MIN	Demo	Demo 'Nicecloud / Regiolokaal' - Taxiritten	30 minutes
15:20	15:40	20	5	MIN	Qualifying 1	Supercar Challenge - SS2 + Sport	20 minutes
15:45	16:05	20	5	MIN	Qualifying 2	Supercar Challenge - GT + SS1 + Prototype	20 minutes
16:10	16:25	15	5	MIN	Qualifying D1	BMW M2 CS Racing Cup Benelux pb Hankook	15 minutes
16:30	16:45	15	5	MIN	Qualifying D2	BMW M2 CS Racing Cup Benelux pb Hankook	15 minutes
16:50	17:20	30	5	MIN	Free Practice 2	BetCity Mazda MX-5 Cup	30 minutes
17:25	17:55	30	0	MIN	Free Practice 1	Ford Fiesta Sprint Cup BE -NL	30 minutes
Saturday 28st October 2023 - 10:00 hour till 18:00 hour (sun goes under on 18:19) at night it will be winter time!							
10:00	10:20	20	5	MIN	Qualifying	Colmore YTCC/NRCC	20 minutes
10:25	10:55	30	5	MIN	Free Practice 2	Ford Fiesta Sprint Cup BE - NL	30 minutes
11:00	11:20	20	10	MIN	Qualifying	BetCityMazda MX-5 Cup	20 minutes
11:30	12:00	30	10	MIN	Race 1	BMW M2 CS Racing Cup Benelux	30 minutes
12:10	12:35	25	0	MIN	Race 1	Colmore YTCC/NRCC	25 minutes
12:35	13:20	45	0	MIN	Break	Lunchbreak	45 minutes
13:20	13:40	20	15	MIN	Qualifying	Ford Fiesta Sprint Cup BE -NL	20 minutes
13:55	14:55	60	15	MIN	Race 1	Supercar Challenge + Protoype Challenge	60 minutes
15:10	15:40	30	15	MIN	Race 1	BetCity Mazda MX-5 Cup	30 minutes
15:55	16:25	30	15	MIN	Race 2	BMW M2 CS Racing Cup Benelux	30 minutes
16:40	17:10	30	15	MIN	Race 1	Ford Fiesta Sprint Cup NL + BE	30 minutes
17:25	17:50	25	0	MIN	Race 2	Colmore YTCC/NRCC	25 minutes
Sunday 29st October 2023 10:00 till 18:00 hour (sun will go under at 17:17 hour)							
10:05	10:30	25	15	MIN	Race 3	Colmore YTCC/NRCC	25 minutes
10:45	11:45	60	5	MIN	Race 3	BMW M2 CS Racing Cup Benelux	60 minutes
11:50	12:10	20	10	MIN	Demo Drives	Supercar Madness sessie 1	20 minutes
12:20	12:50	30	5	MIN	Race 2	BetCity Mazda MX-5 Cup	30 minutes
12:55	13:20	25	0	MIN	Demo	Supercar Madness Dragraces	25 minutes
13:20	13:50	30	5	MIN	Demo	Supercar Madness Hypercar demo sessions	30 minutes
13:55	14:25	30	5	MIN	Gridwalk	Gridwalk - SCM Display.	30 minutes
14:30	15:30	60	5	MIN	Race 2	Supercar Challenge + Protoype Challenge	60 minutes
15:35	15:55	20	5	MIN	Demo Drives	Supercar Madness sessie 2	20 minutes
16:00	16:30	30	5	MIN	Race 2	Ford Fiesta Sprint Cup NL-BE	30 minutes
16:35	16:55	20	0	MIN	Demo Drives	Supercar Madness sessie 3	20 minutes



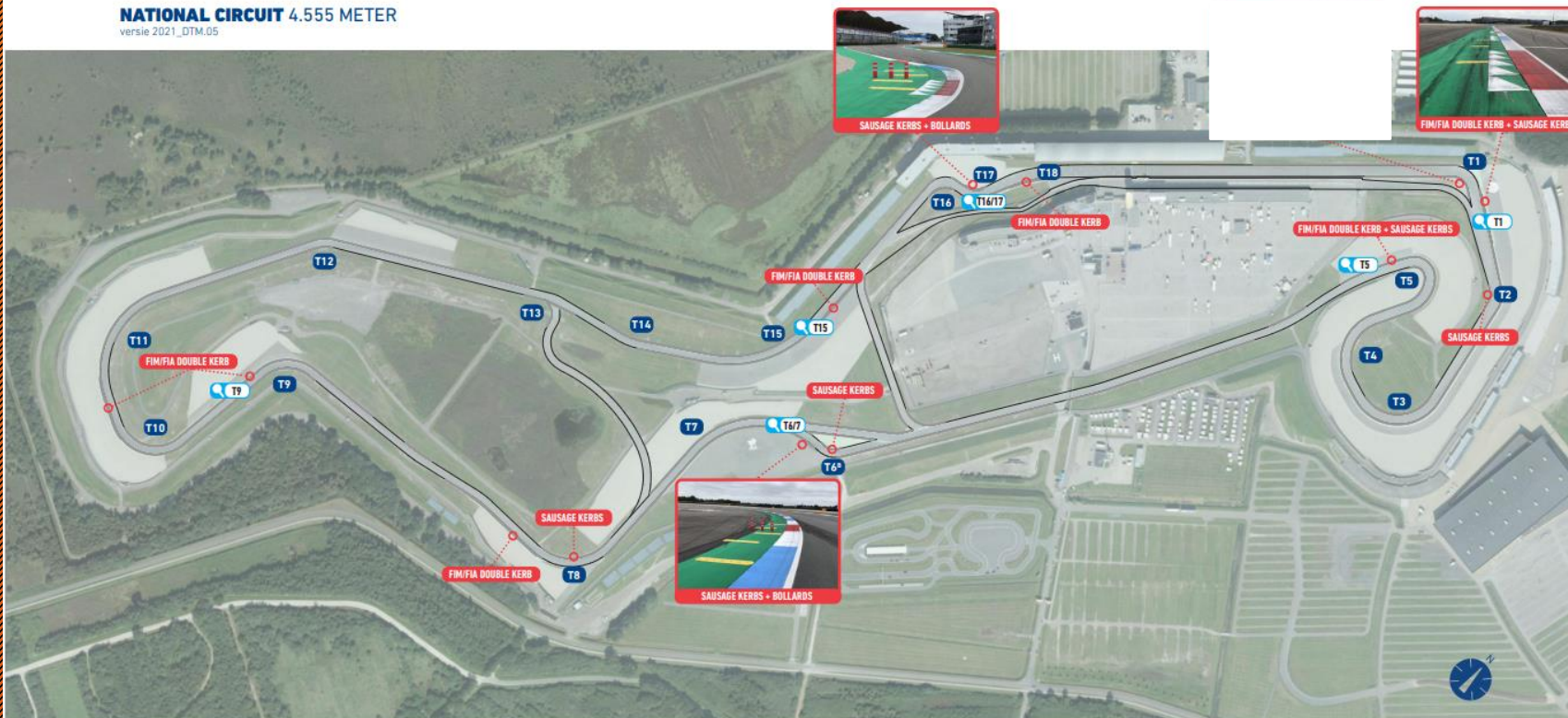
# The Track: Kerbs, Bollards and Cones



## SAUSAGE KERBS AND BOLLARDS



**NATIONAL CIRCUIT** 4.555 METER  
versie 2021\_DTM.05



T17 JUDGE OF FACT 8

17 BAANPOST MARSHAL POST 20

T18 BOCHTNUMMER TURN NUMBER 18

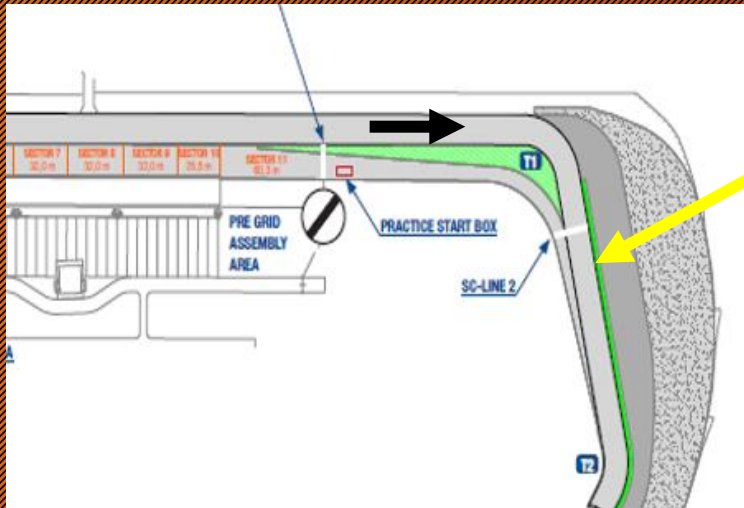


# Track Limits





# Allowed and not allowed... Turn 1



Turn 1





# Track Limits and Cones



Tracklimit = White line or Cone

Prohibited = 4 wheels over the white line or touching a cone  
(No cone means white line)

## Penalty's applied:

Free Practise: = 3 times = No action but a **Black and White warning**

> 4 times = **Drive through** in qualify

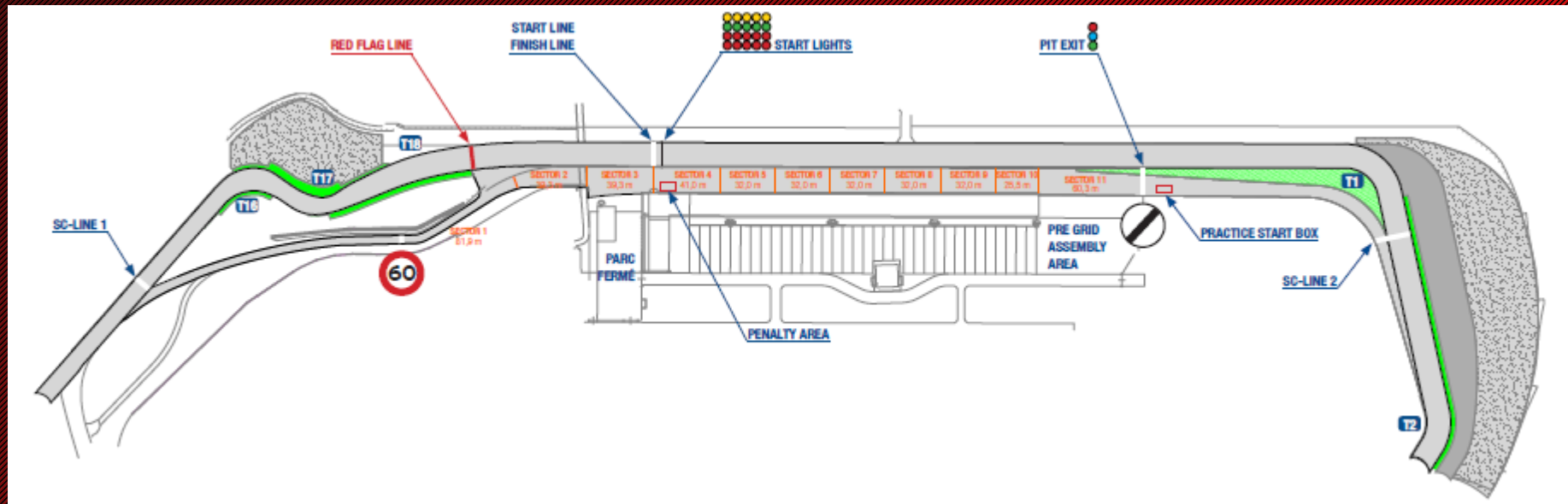
Qualify: = every time = **Disqualify** lap time

Race:  
< 3 times = No action  
= 3 times = Black and White warning  
> 4 times = **Time penalty** (According V-Max penalty list)





# Start-Finish & Pit lane





White line exit pit lane

ends



DO NOT TOUCH!



Short Cut to pit lane









# 1<sup>st</sup> Chicane

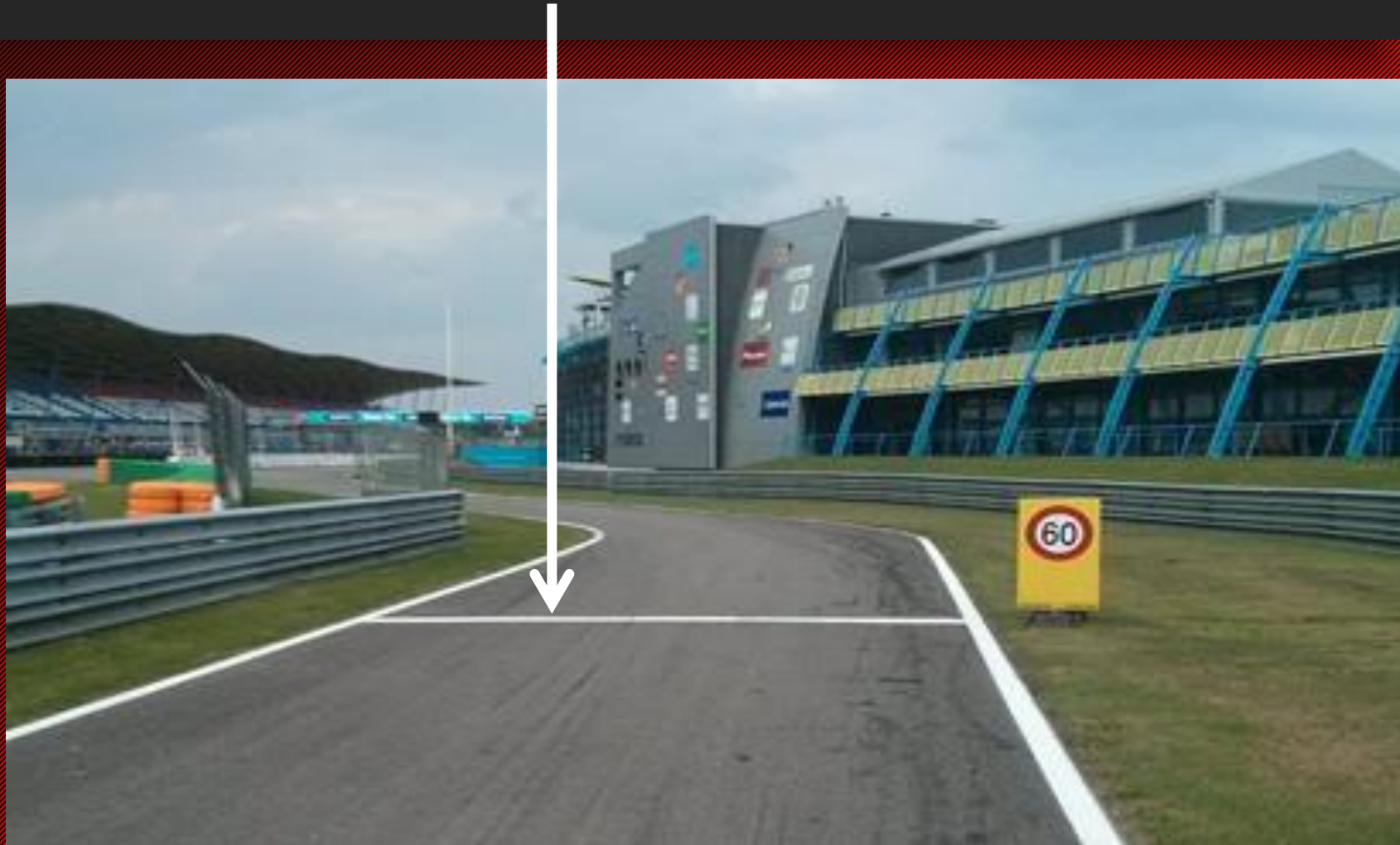






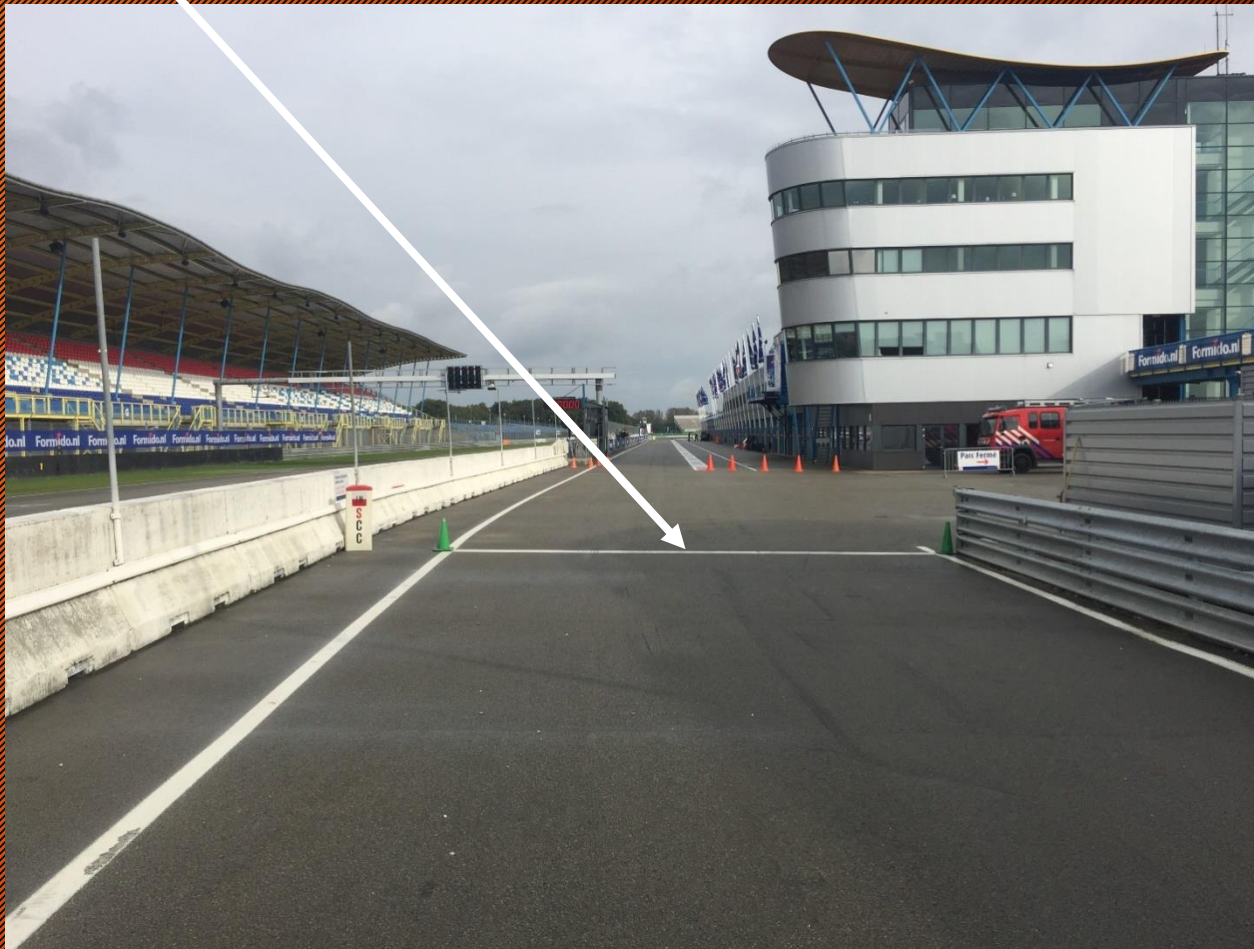


# Pit Lane speed limit





Pit Stop (Commence) Bulletin will follow





Pit lane exit, end off 60km/h





Penalty Box:  
Stop & Go – Black Flag – Technical Flag





# TT Circuit Assen - Logistics



## Practise and qualify:

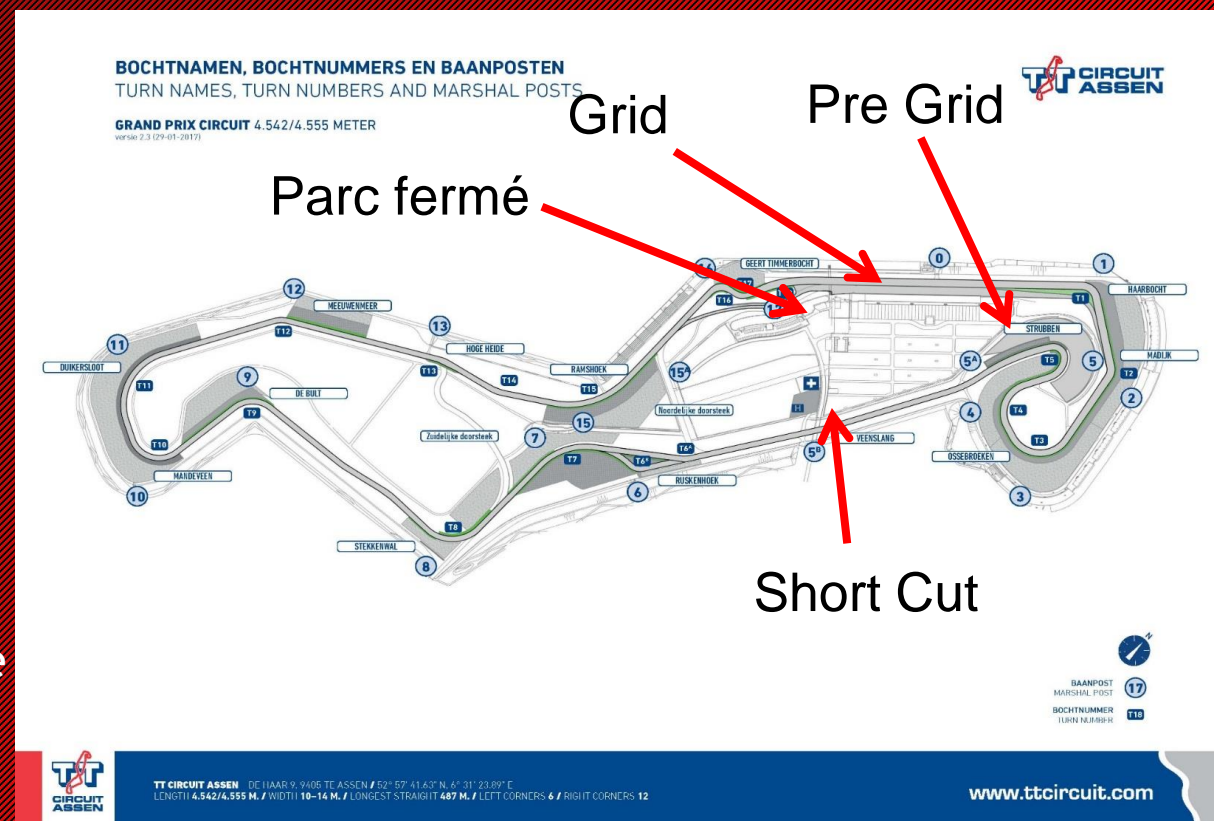
- Start from pit lane or pre grid. Be ready, 15 minutes before the start of the session!
- Chequered flag, full cooling down lap into pit lane.
- Parc Fermé after Qualify.

## Races:

Sa 13.45h = ~~TIRE TROLLEYS ON THE GRID~~

Su 13.50h = TIRE TROLLEYS ON THE GRID

- Start from pre grid, 20 minutes before start of the race
- Drive to the grid via short cut.
- 5 min, 3 min, 1 min 30 sec. Green flag.
- Leading cars for 1 lap. 1 group!





# Logistics Rolling Start



Formate, stay in lane

Leading Car in Pit Lane

Startlights



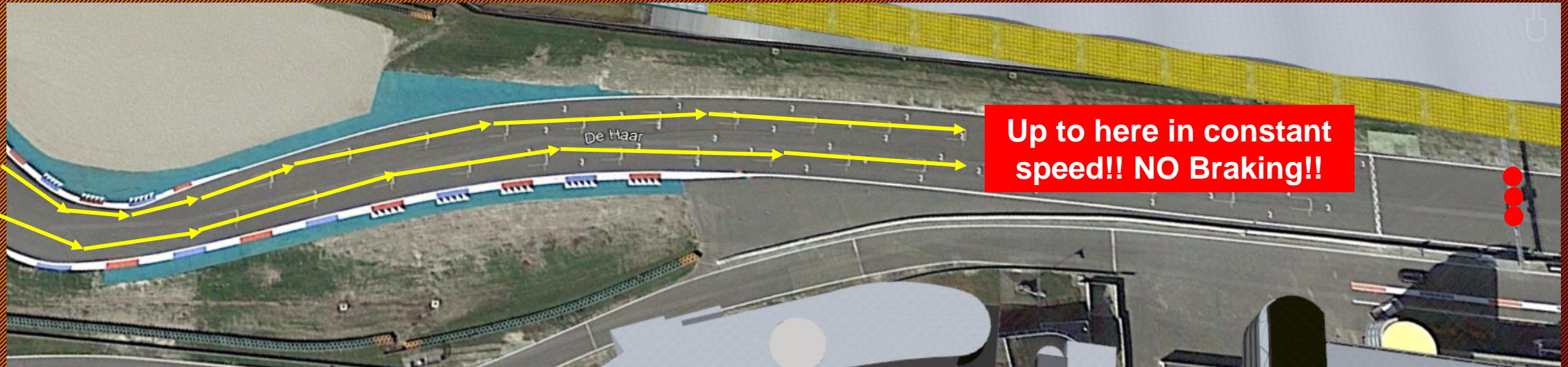


# Rolling start





Stay in lane!  
Drive through te boxes!!!





Rolling start  
Light off = start





# CIRCUIT DE SPA FRANCORCHAMPS®



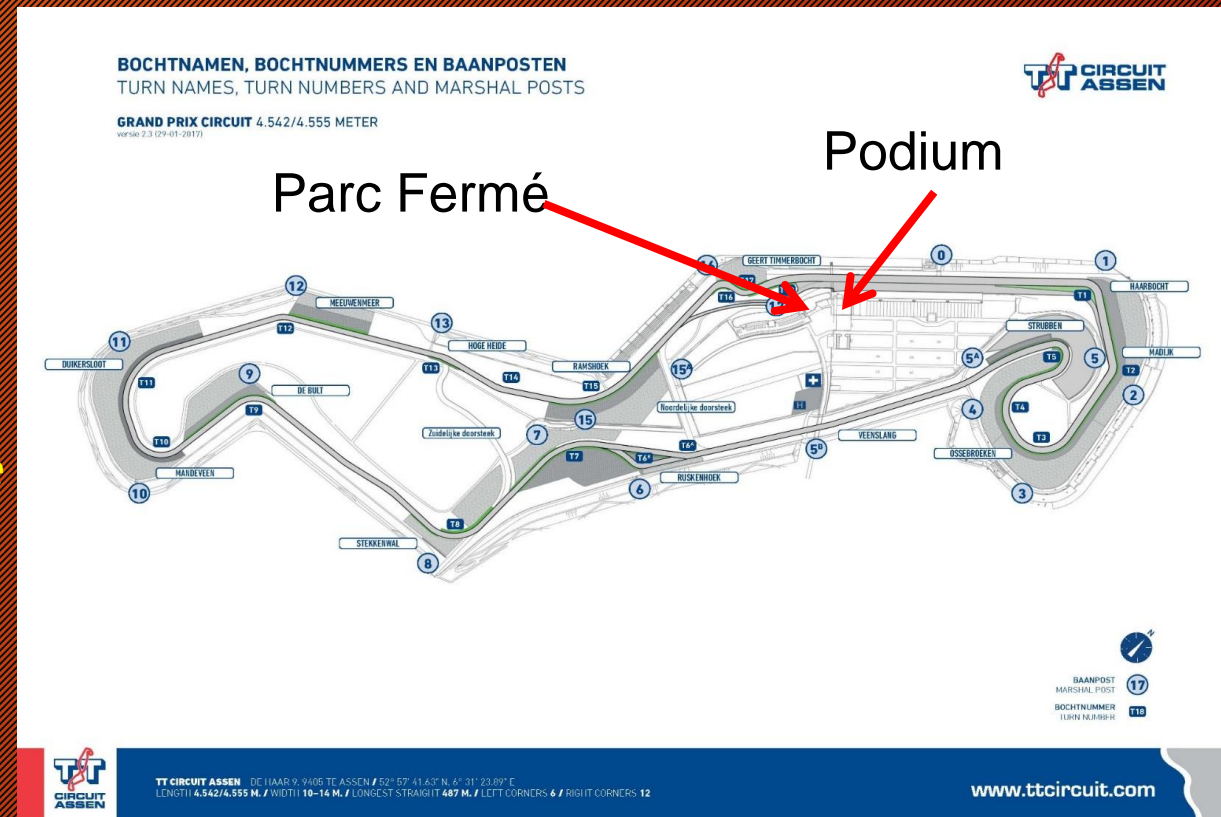


# TT Circuit Assen - Logistics



## Races:

- Split Pit Window 20-30 min and 30-40 min. (BULLETIN)
- Race = 60 minutes
- Chequered flag, full cooling down lap, in to pit lane.
- First 3 cars under **podium**. All other cars to **Parc Fermé**
- First 3 cars will be pushed back to Parc Fermé





# Neutralisation possibility's



Full Course Yellow (FCY) 80 KpH

Ending = Full Course green

Safety Car (SC) Find and join the pack, single file

Wait for green flag at control line

Red Flag (Code red) Please respect marshals at work

Practice and qualify = stop in Pit Lane

Race: Stop in 1 line at red flag line



# Extra Information



- Rain? = lights on!
- Technical problem = Park the Car, out of the car and stand behind guardrail



Orange = opening

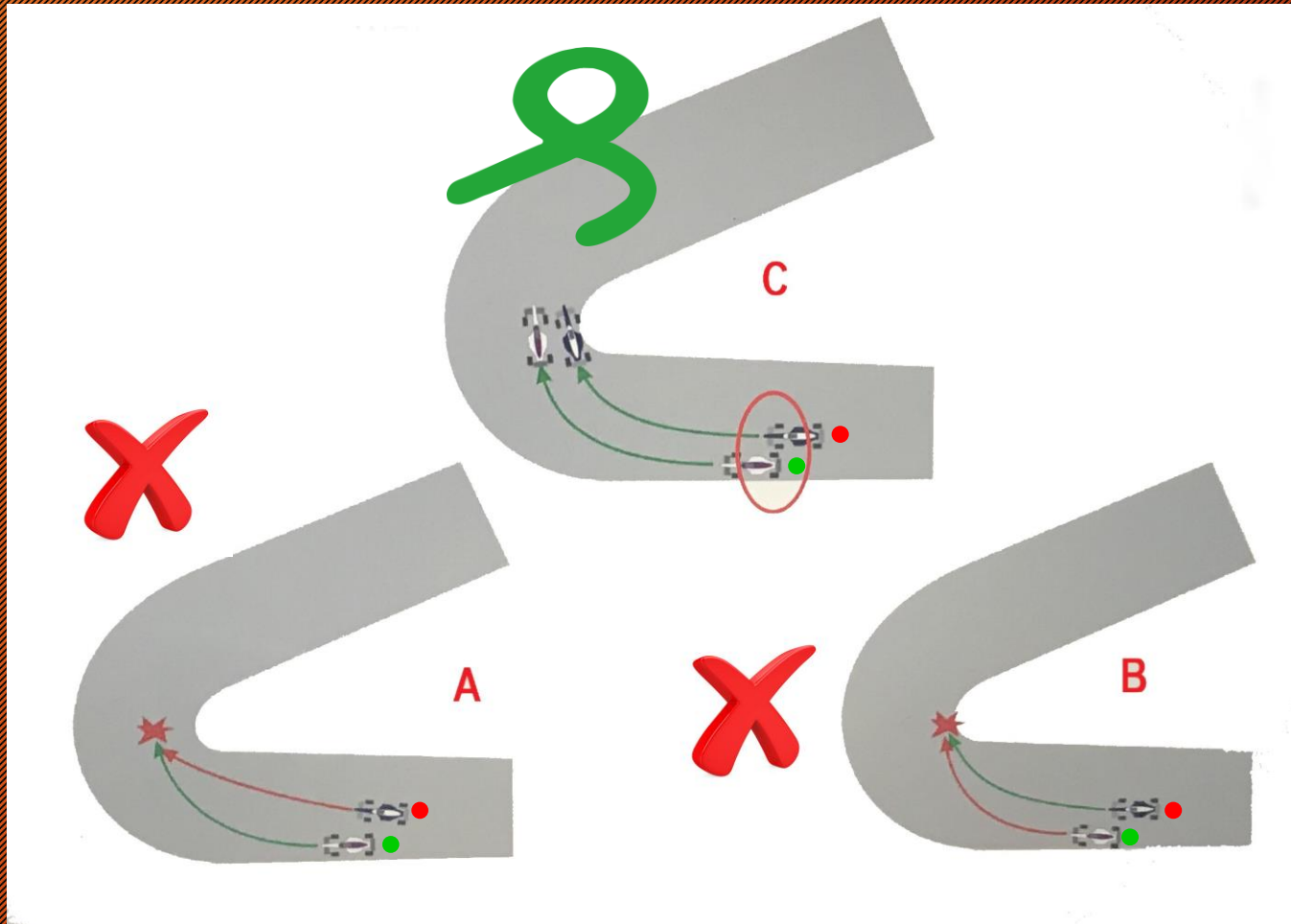


# Digi-Flags





# Overtaking





# Driving Conduct



- Jumpstart or incorrect start position
- Ignoring flag signals or Instructions from marshals
- Overtaking under yellow, red or after chequered flag
- Dangerous driving behaviour with or without contact
- Unsportsmanlike behaviour
- Change direction more than once
- Take advantage of an indistinctly situation
- Track limits



# Driving conduct will be penalised



- Deleting fastest lap time(s)
- Time penalty
- Grid penalty
- Starting from pitlane
- Drive through
- Stop and Go

Penalty comes with extra point(s) on your licence:

- 5 points      drop of 3 places on the grid next race
- 8 Points      drop of 10 places on the grid next race
- 10 Points      Start from pit lane next race



# Reminder off flags/signs from Race Control (With starting number)



33

Warning

Warning, Just once



33

Technical problem

Enter pit lane immediately



33

Attent to Race Director

Enter pit Lane immediately



ANY  
QUESTIONS  
?





Stay safe and  
Be a good sportsman  
Enjoy the weekend